



**rema**  
construction technologies



# ABOUT US

Rema was established in July 2007 to operate in engineering services and applications in the construction sector. Immediately after our establishment; wide span industrial buildings, villa-style low-rise buildings, inter-storey and multi-storey buildings, residential buildings and architectural properties have started to take part in construction projects. We successfully completed the structural steel productions with engineering services for logistics warehouses, shopping malls, technological production buildings, hotels and residential constructions. Rema is a company that gives importance to building technology and structural engineering. Our company has many important projects in the sector has undertaken engineers and technical staff that are expert in the sector. Our goal is to create a value together with all the employees by creating a transparent and principled structure that is dynamic and open to change, with high internal solidarity.

## Our Mission

Complete profitable projects by developing competitive products in local and international markets.

## Our Vision

To create leading brands with a qualified team.

## Services

Rema provides project, engineering, consultancy and construction services on an international level. Our expert team with the knowledge and experience, economic solution, security, quality, work program, efficiency, technological innovations, practical solutions and ease of use criteria, taking into account the realization of your investments and realizes the construction.

- Feasibility Studies, Planning and Evaluation Studies
- Design and Project Services
- Project Management and Consultancy Services
- Construction Services



## İBRAHİM TUNAY CAN

Can is a graduate of Istanbul Technical University, Department of Civil Engineering continues his 23-year professional practice on the domestic and international superstructure projects of construction companies and design offices. In these companies, the responsibilities of Design Engineer, Technical Office Engineer, Site Manager, Project Manager, Factory Manager, Quality Representative, General Manager Assist. And the General Manager. Design, project, production and installation, planning, quality control and project management in the construction of many important and prestigious local and international Reinforced Concrete and Steel Industrial, Trade, Residential, Shopping Center, Stadium, Hospital, Airport, Data Center took part in the process.

He is still working as a manager and consultant in the fields of structural design, façade engineering, project management and customer representation in Rema Construction, of which he is the founder. Can is married and has two children. He is personally interested in sailing and street photography.



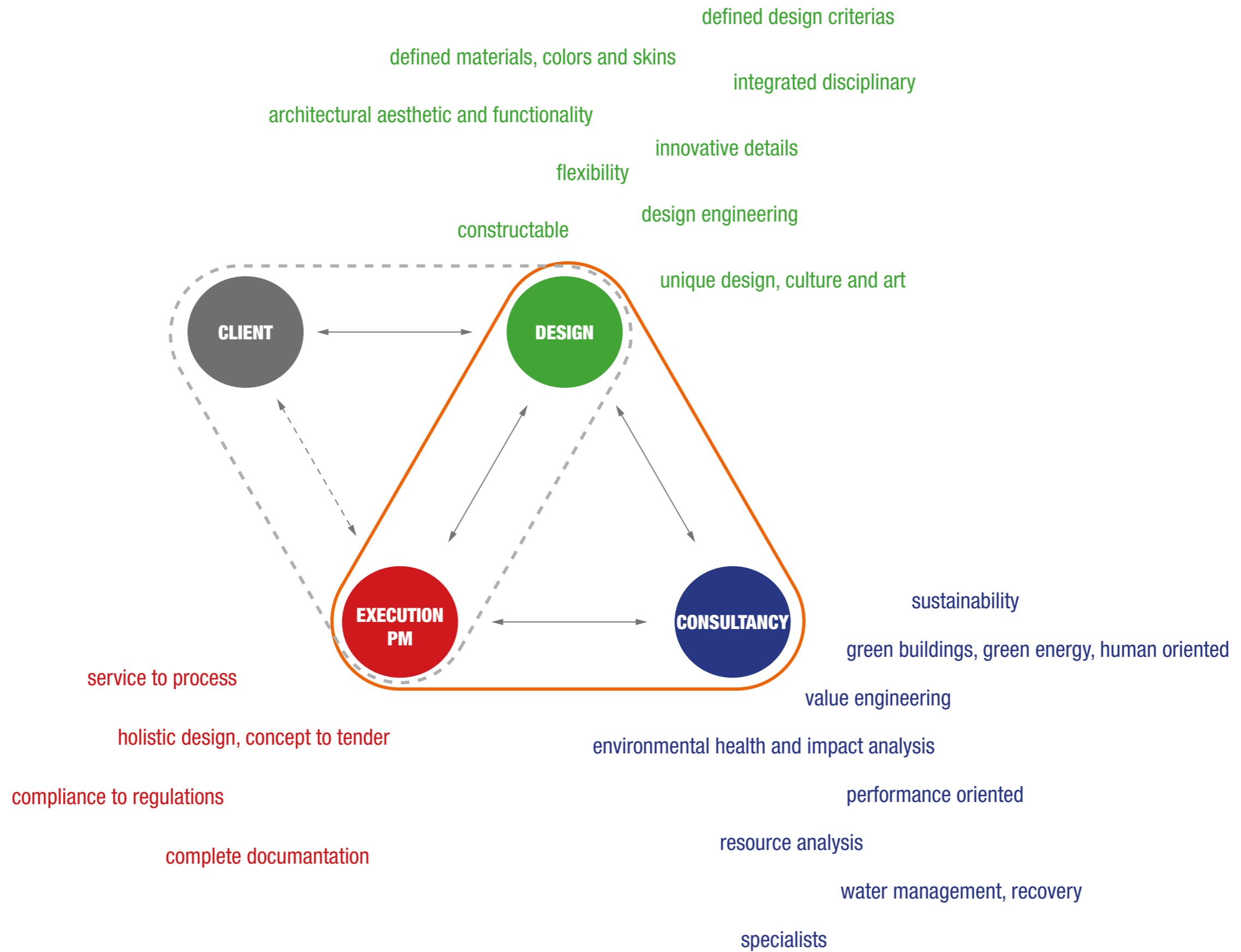
## HASAN AKKAR

He graduated from İstanbul Technical University, Civil Engineering Faculty in 1998 and has a Master of Science degree in 2001 in structural engineering. He has worked under different roles in some companies as a Design Engineer, Design Chief, Technical Office Manager, Project Manager and Project Coordinator.

He has taken responsibility in many national and foreign major projects during their 24 years engineering experience especially in design-build projects which is important in terms of using value engineering instruments. He is still working as a manager in his own design and project management company and is provided consultancy services to the engineering and construction companies. He has taken critical role of many budgets and time-oriented projects as a consultant.

He is married and has two children. He is personally interested in bush walking, camping and caravan camping.

# DESIGN APPROACH



# \_CONTENT

TRANSPORTATION  
OFFICES  
INDUSTRIAL  
CULTURAL  
ENERGY PLANT  
MIXED USE  
HOTELS-TOURISM  
SHOPPING MALL  
HOUSING  
EDUCATIONAL & SPORTS  
HEALTH

SELECTED PROJECTS

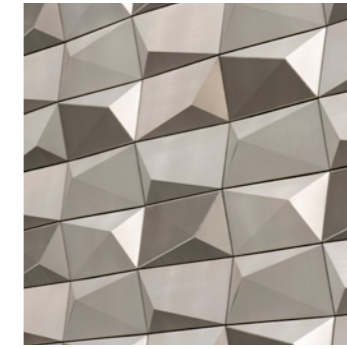
## TRANSPORTATION



### KUWAIT INT. AIRPORT

*Kuwait*  
Status: Completed, 2018

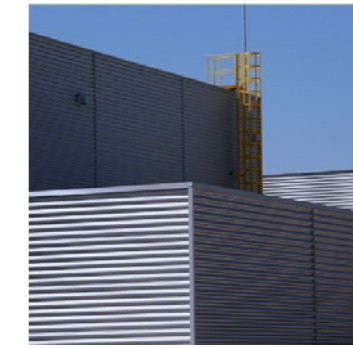
## OFFICE



### S2OSB

*Sakarya, Turkey*  
Status: Completed, 2016

## INDUSTRIAL



### SERRA FACTORY

*Eskişehir, Turkey*  
Status: Completed, 2019

## CULTURAL



### SAKARYA CITY LIBRARY

*Sakarya, Turkey*  
Status: Commissioned, 2017

## INDUSTRIAL



### DATA CENTER

*Ankara, Turkey*  
Status: Completed, 2009

## ENERGY PLANT



### DELTA ENERGY

*Tekirdağ, Turkey*  
Status: Completed, 2013



### RWE&TURCAS

*Denizli, Turkey*  
Status: Completed, 2011



### NOW BOMONTI

*Şişli, Istanbul, Turkey*  
Status: Completed, 2012

## OFFICE



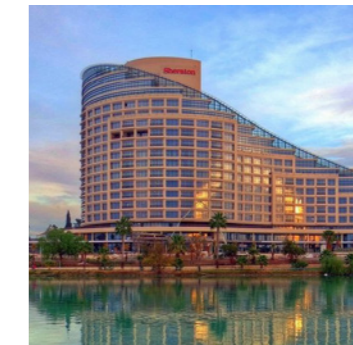
### ÇİFTÇİ TOWERS

*Zincirlikuyu, İstanbul, Turkey*  
Status: Completed, 2013



### MICROSOFT HQ

*Levent, İstanbul, Turkey*  
Status: Completed, 2008



### SHERATON HOTEL

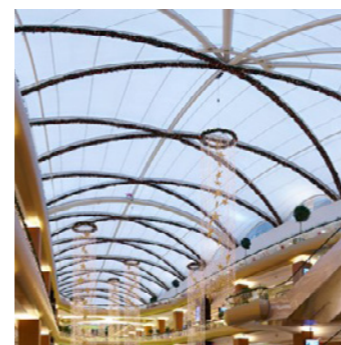
*Adana, Turkey*  
Status: Completed,



### DIVAN HOTEL

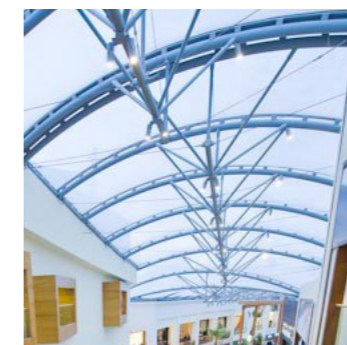
*Elmadağ, İstanbul, Turkey*  
Status: Competition, 2014

## SHOPPING CENTER



### A+ SHOPPING CENTER

*Ataköy, İstanbul, Turkey*  
Status: Completed, 2010



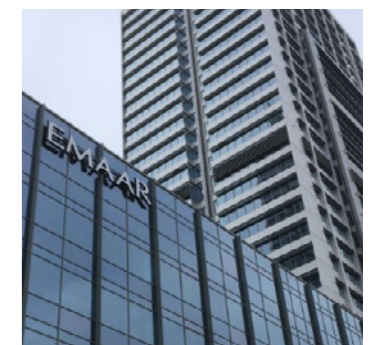
### FORUM ISTANBUL

*Bayrampaşa, İstanbul, Turkey*  
Status: Completed, 2009



### NEOMARINE

*Pendik, İstanbul, Turkey*  
Status: Completed, 2009



### EMAAR SQUARE

*Üsküdar, İstanbul, Turkey*  
Status: Completed, 2017

# KUWAIT INTERNATIONAL AIRPORT TERMINAL 4

**\_Content**  
Transportation - Airport (55.000 m<sup>2</sup>)

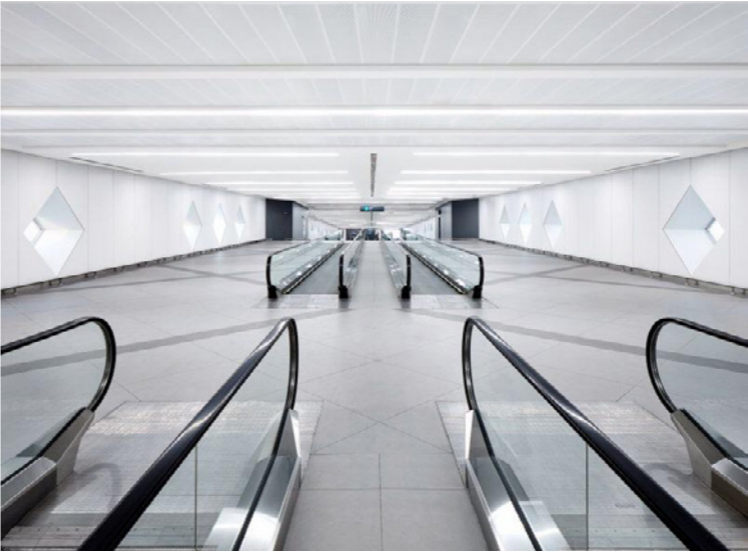
**\_Status**  
Completed

**\_Location**  
Kuwait

**\_Date**  
2018

**\_Cost of Construction**  
\$4.3bn (KWD1.3bn)

**\_Architectural Design by**  
Foster + Partners



# S2OSB HEADQUARTERS & CONFERENCE HALL

**\_Content**  
Office & Conference Hall (3,000 m<sup>2</sup>)

**\_Status**  
Completed

**\_Location**  
Hendek, Sakarya, Turkey

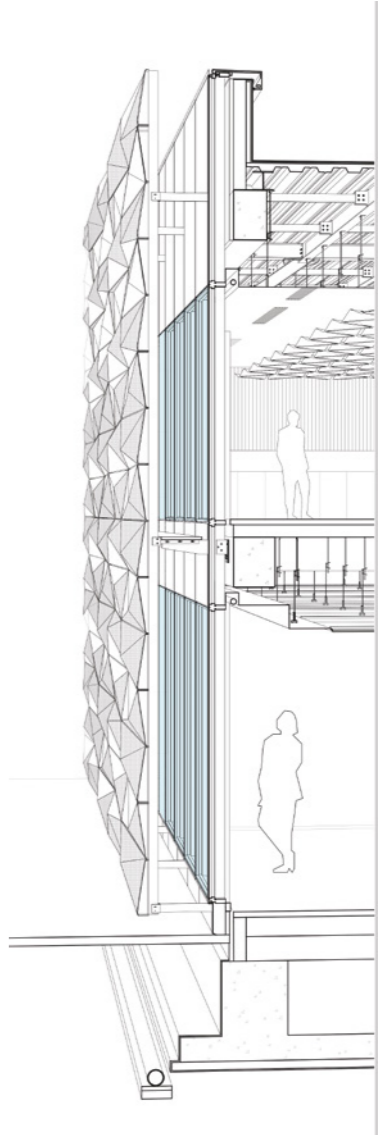
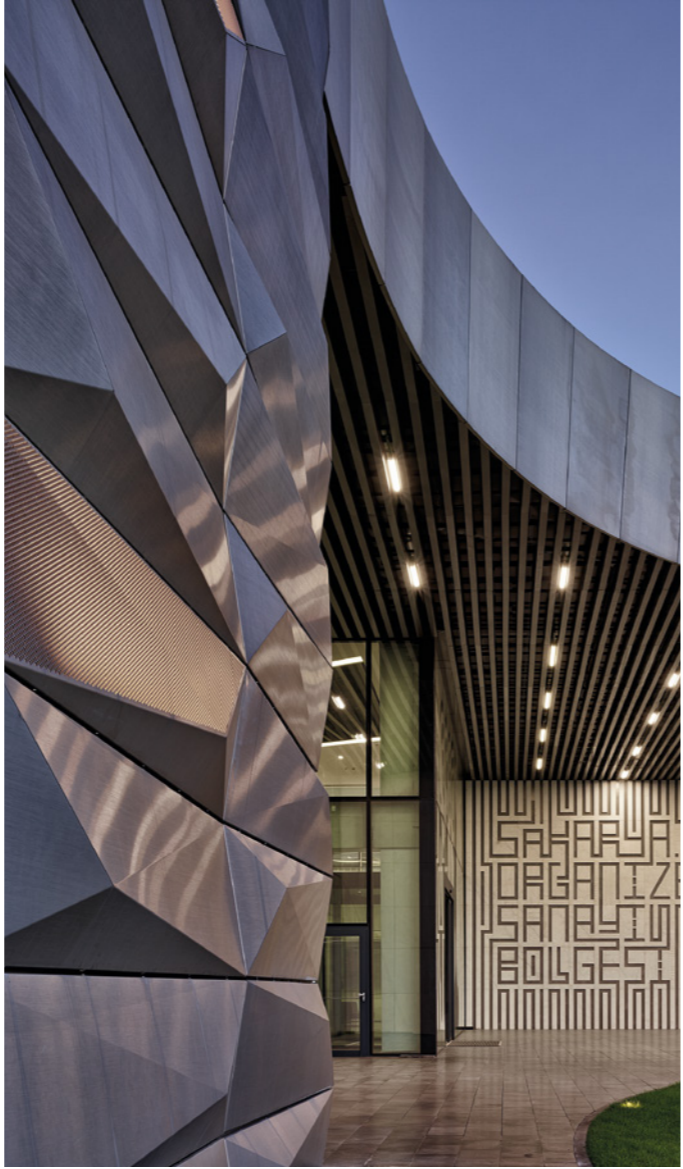
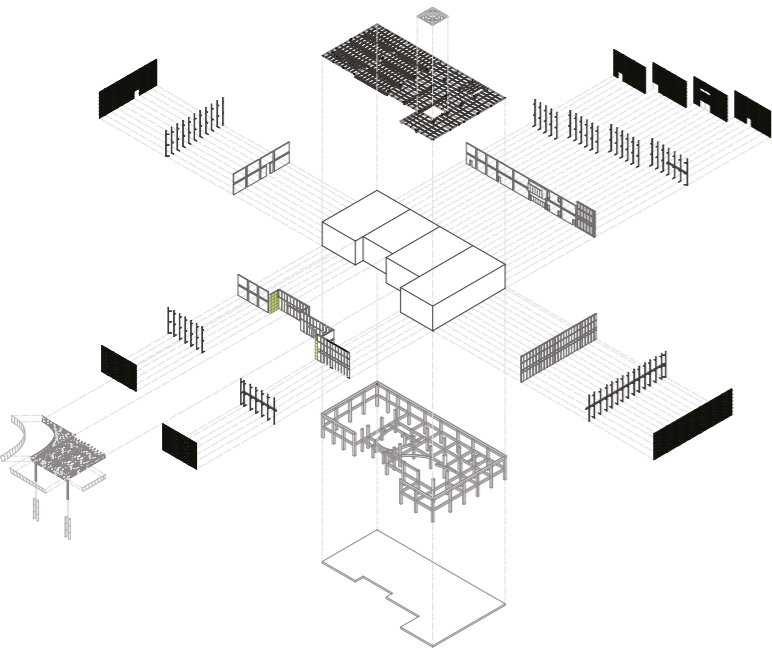
**\_Date**  
2014-2016

**\_Client**  
Sakarya 2. Organize Sanayi Bölgesi  
Tunay Can (Client Rep.)

**\_General Contractor**  
Yüksel İnşaat

**\_Architectural Design by**  
BINAA

**\_Photography**  
Thomas Mayer & Cemal Emden



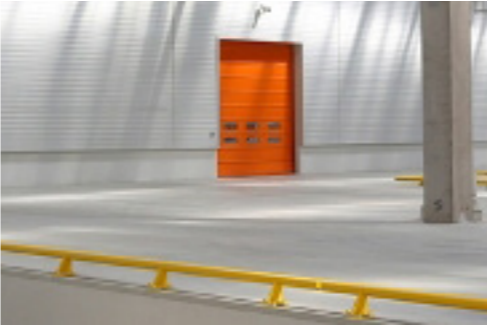
# SERRA SUNGER FACTORY

**\_Content**  
Industrial - Factory (40,000 m<sup>2</sup>)

**\_Status**  
Completed

**\_Location**  
Eskişehir

**\_Date**  
2013



# SAKARYA CITY LIBRARY

**\_Content**  
Cultural - City Library (16,000 m<sup>2</sup>)

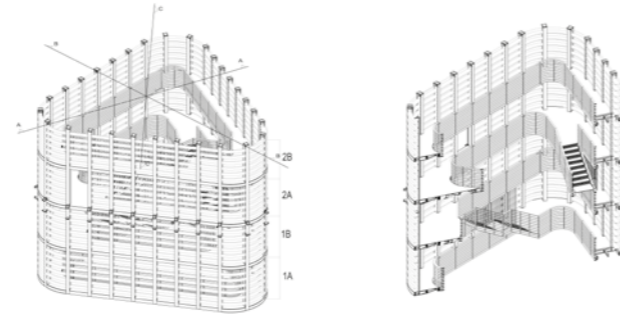
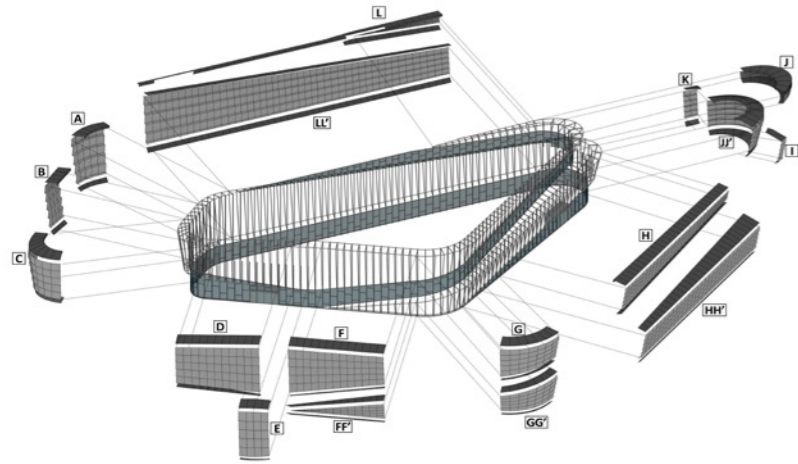
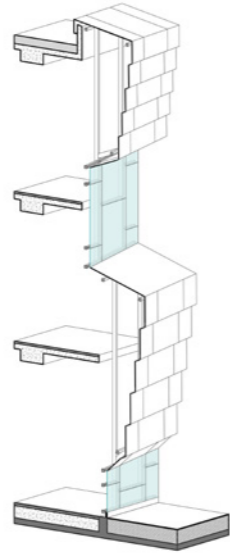
**\_Status**  
Commissioned

**\_Location**  
Sakarya, Turkey

**\_Date**  
2017

**\_Client**  
Sakarya Municipality + Republic of Turkey  
Ministry of Culture and Tourism

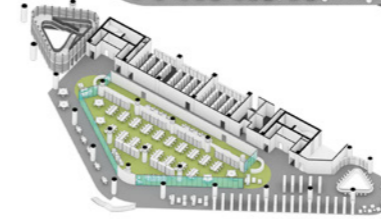
**\_Architectural Design by**  
BINAA



**2nd floor**



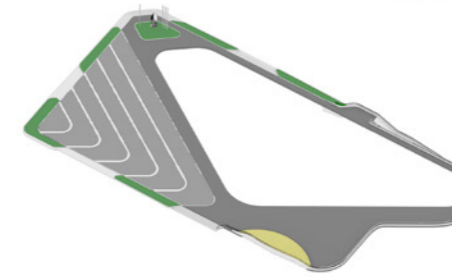
**1st floor**



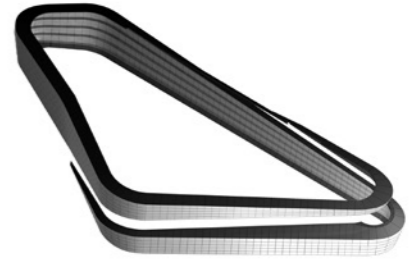
**Ground floor**



**Landscape**



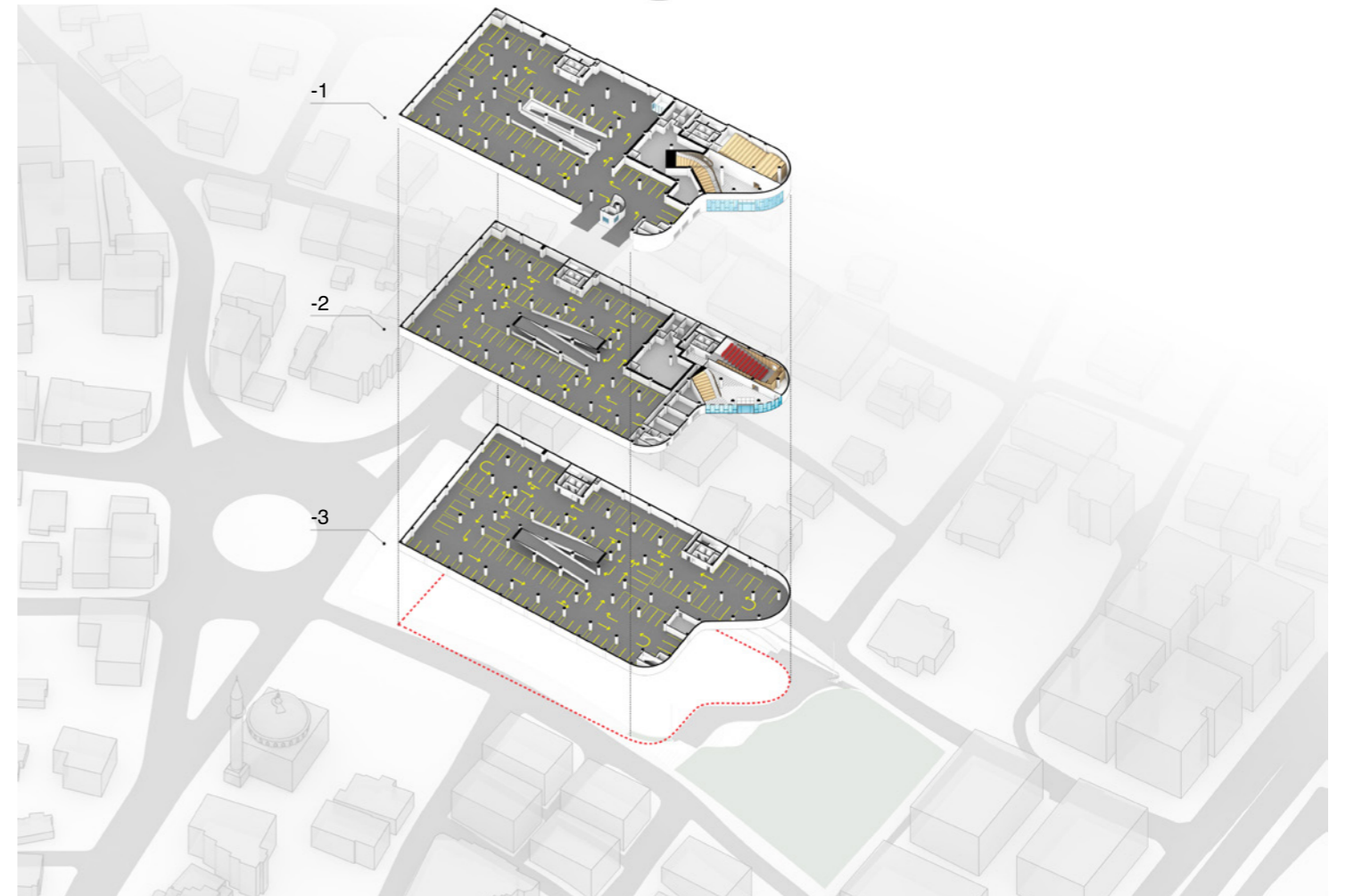
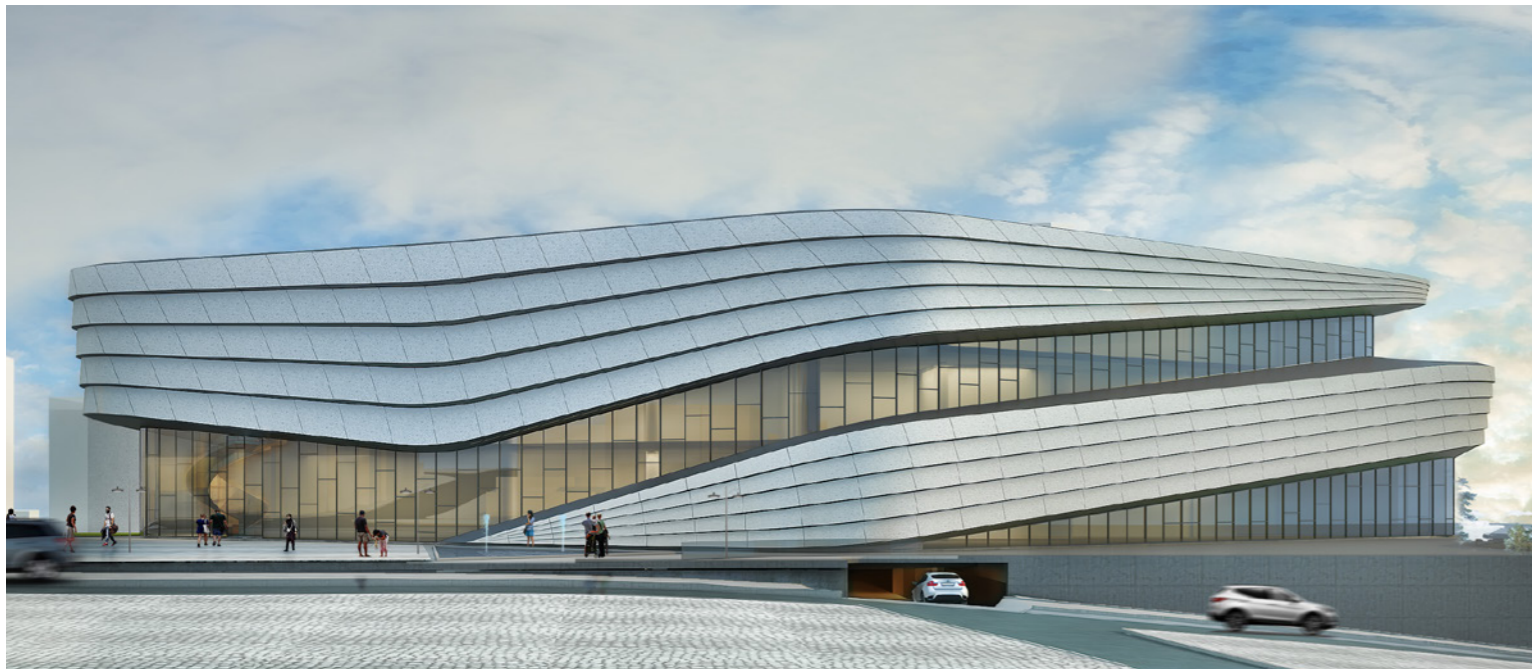
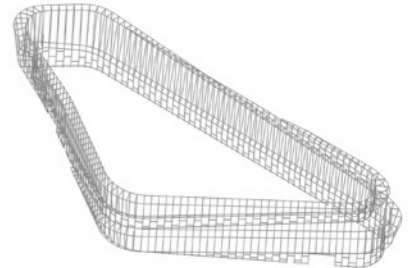
**Metal Facade**



**Curtain Wall**



**Structure**





# ÇANAKKALE MBT

**\_Content**  
Çanakkale City Integrated Solid Waste Management System Mechanical and Biological Treatment Plant

**\_Status**  
Completed

**\_Location**  
Çanakkale, Turkey

**\_Date**  
2021

**\_Client**  
SUEZ Çanakkale A.Ş.



# IPEKYOL TEXTILE FACTORY

**\_Content**  
Industrial Factory (20.000m<sup>2</sup>)

**\_Status**  
Completed

**\_Location**  
Edirne, Turkey

**\_Date**  
2006

**\_Client**  
TWIST Textile



# KALE AVITATION PLANT & OFFICES

**\_Content**  
Industrial Factory & Offices (18.000m<sup>2</sup>)

**\_Status**  
Completed

**\_Location**  
İstanbul, Turkey

**\_Date**  
2004

**\_Client**  
Kale Avitation



# TURKCELL ANKARA DATA CENTER

**\_Content**  
Industrial - Data Center (46,200 m<sup>2</sup>)

**\_Status**  
Completed

**\_Location**  
Söğütözü, Ankara

**\_Date**  
2019

**\_Client**  
Turkcell Gayrimenkul Hizmetleri A.S



# DELTA ENERGY

**\_Content**  
Industrial - Energy Plant

**\_Status**  
Completed

**\_Location**  
Lüleburgaz, Tekirdağ

**\_Date**  
2013



# RWE&TURCAS POWER STATION

**\_Content**  
Industrial - Energy Plant

**\_Status**  
Completed

**\_Location**  
Honaz, Denizli

**\_Date**  
2011

**\_Cost of Construction**  
€600m



# NOW BOMONTI

**\_Content**  
Mixed Use (46,000 m<sup>2</sup>)

**\_Status**  
Completed

**\_Location**  
Şişli, İstanbul

**\_Date**  
2012

**\_Client**  
Almer Textile

**\_Architectural Design by**  
Tabanlıoğlu Architects



# ÇİFTÇİ TOWERS

**\_Content**  
Mixed use (25.000 m<sup>2</sup>)

**\_Status**  
Completed

**\_Location**  
Zincirlikuyu, İstanbul

**\_Date**  
2013

**\_Client**  
Çiftçiler Gayrimenkul

**\_General Contractor**  
ARUP

**\_Architectural Design by**  
JOHN MCASLAN & PARTNERS



# MICROSOFT HQ

**\_Content**  
Offices (8,456 m<sup>2</sup>)

**\_Status**  
Completed

**\_Location**  
Levent, İstanbul

**\_Date**  
2008

**\_Cost of Construction**  
\$6M

**\_General Contractor**  
K.G: Mimarlık

**\_Architectural Design by**  
Swanke Hayden Connell Architects



# SHERATON HOTEL

**\_Content**  
Hotels (12.820 m<sup>2</sup>)

**\_Status**  
Completed

**\_Location**  
Adana

**\_Date**  
2007-2010

**\_Client**  
Serka-Adalı Group/ Starwood Hotels & Resorts

**\_General Contractor**  
Serka İnşaat

**\_Architectural Design by**  
Metex/ İki Design Group



# DIVAN ISTANBUL

**\_Content**  
Hotels (25.064 m<sup>2</sup>)

**\_Status**  
Completed

**\_Location**  
Eimadağ, İstanbul

**\_Date**  
2008-2011

**\_Cost of Construction**  
\$50M

**\_Client**  
KOÇ HOLDİNG (Palmira Turizm Ticaret A.Ş)

**\_Architectural Design by**  
The Office of Thierry W Despont



# ATAKÖY PLUS MALL

**\_Content**  
Shopping Center (97.000 m<sup>2</sup>)

**\_Status**  
Completed

**\_Location**  
Bakırköy, İstanbul

**\_Date**  
2003-2010

**\_Architectural Design by**  
Dârâ KIRMIZIOPRAK Mimarlık  
GAD Architecture



# NEOMARIN MALL

**\_Content**  
Shopping Mall (35.000 m<sup>2</sup>)

**\_Status**  
Completed

**\_Location**  
Pendik, İstanbul

**\_Date**  
2009

**\_Cost of Construction**  
\$80M

**\_Client**  
Krea Gayrimenkul

**\_Architectural Design by**  
Saner Mimari Tasarım



# FORUM ISTANBUL MALL

**\_Content**  
Shopping Center (164.000 m<sup>2</sup>)

**\_Status**  
Completed

**\_Location**  
Bayrampaşa, İstanbul

**\_Date**  
2005-2009

**\_Client**  
Multi Turkmall

**\_General Contractor**  
Arup

**\_Architectural Design by**  
ERA Şehirçilik Mimarlık



# EMAAR SQUARE

**\_Content**  
Mixed use (150.000 m<sup>2</sup>)

**\_Status**  
Completed

**\_Location**  
Üsküdar, İstanbul

**\_Date**  
2008-2017

**\_Architectural Design by**  
DP Architects / İki Design Group



# REFERENCES

## INDUSTRIAL

Turkcell Data Center Project / Ankara  
Serra Foam Production Facilities / İzmir  
Goodyear Lastikleri A.Ş., Tire Plant / Kocaeli  
Uls Trailer Production Plant, Akyazı / Sakarya  
Marmara Siegener Galvanizing Facilities / Kocaeli  
Nasakoma Metal Processing Facilities, Tuzla / Istanbul  
Denso Otomotiv Plant, Extension Project / Kocaeli  
Ata Turan Warehouse, Şekerpınar / Kocaeli  
Gea Klima Air Conditioner Production Facilities / Gebze  
MMK-Atakaş Metal Processing Plant, Dilovası / Kocaeli  
Yurtiçi Kargo Warehouse / Trabzon  
Solmaz Lojistik Warehouse, Haramidere / Istanbul  
Degussa Chemical Warehouse, Tuzla / Istanbul  
Traçim Cement Plant / Kırklareli  
Can Yapı Warehouse and Admin Building / Kocaeli  
SAS Matrix Chemical Plant and Warehouse / Tekirdağ  
Tuğut İnşaat Warehouse, Şekerpınar / Kocaeli  
Ataklar Nakliyat Warehouse, Samandıra / Istanbul  
Arçelik A.Ş. Power Free Conveyor Systems / Kocaeli  
Radtek Radiator Production / Sakarya  
Textile Production Facilities / Sakarya  
Arçelik A.Ş. Washing Machine Plant / Kocaeli  
MMB Textile Production / Istanbul  
Kardüz Textile Production / Düzce  
Dendro Parkesan / Kocaeli  
Tekiş Teknik Erozyon Extension Project / Kocaeli  
İCO Plastik, PVC Production / Sakarya  
İstikbal Furniture Production Warehouse / Kayseri  
Boreks Piping Production / Istanbul  
Toyota Otomotiv Power Free Conveyor Systems / Sakarya  
Polypex Chemical Plant Process Towers / Tekirdağ  
Horoz Nakliyat Warehouse / Kocaeli  
Eczacıbaşı Betal Aktam Building / Tekirdağ  
Kale Altınay Robotic Systems and Head Quarter / Istanbul  
İpekyol Textile Production Facilities / Edirne  
SQM Chemical Plant and Warehouse / Antalya  
Abacı Textile Production Facilities / Istanbul  
Sinpaş İnşaat Warehouse, Çengelköy / Istanbul  
DR. Tarsa Chemical Plant Warehouse / Antalya  
Han Makine Production / Istanbul  
Tadım Kuruyemiş Production Warehouse / Kocaeli  
Kemal Tekinalp Headquarter and Production Facilities  
Halkalı Kağıt Warehouse / Istanbul  
Sennur Plastik Warehouse / Istanbul  
Protech LKW SRL Warehouse / Romania  
Boyteks Textile Equipment Mezzanine / Kayseri  
DR. Tarsa A.Ş. Equipment Mezzanine / Antalya  
Şişecam Soda Sanayi Cogeneration Power Plant / Mersin  
Organik Chemistry Polimer Production / Istanbul  
İzocam A.Ş. Rockwool Production / Kocaeli  
Degussa Chemistry Plant / Istanbul  
Gürbüz Nut Processing Facilities / Düzce  
Petrol Stations Project / Russia

## POWER PLANT

RWE - TURCAS Denizli Power Plant  
Delta Enerji / Tekirdağ  
Doğa Enerji GEA Power Plant / Istanbul  
IMES Industrial Zone, Natural Gas Plant / Kocaeli  
Palmet Enerji, Lüleburgaz / Kırklareli

## TRANSPORTATION

Kuwait International Airport New Terminal 4  
IGA Istanbul New Airport  
Atatürk Int. Airport Domestic L. Ent. Building / Istanbul  
Zvartnots International Airport / Armenia

## SHOPPING MALL

Sembol Shopping Mall / İzmit  
Emaar Square Towers / Istanbul  
Water Garden Shopping Mall Project, Nostalji Piazza  
Ataköy Plus Shopping Mall / Istanbul  
Forum Shopping Mall, Bayrambaşa / Istanbul  
İkbal Shopping Mall / Afyonkarahisar  
Deepo Shopping Mall / Antalya  
Neo Marine Shopping Mall, Pendik / Istanbul  
Vadi İstanbul Residence Project / Istanbul  
Canpark Ümraniye Shopping Mall / Istanbul

## HOUSING

Uphill Court Towers, Ataşehir / Istanbul  
Sevim Residence Project / Kahramanmaraş  
Göcek S.Aksoy Villa Project / Muğla  
Sultan Makamı Palace, Çengelköy / Istanbul  
Prime İstanbul Residence Project  
Ata Residence Project, Çamlıca / Istanbul

## MIXED USE

Akasya Residence Project, City Part, Acıbadem / Istanbul  
Akasya Residence Project, Lake Part, Acıbadem / Istanbul  
Spine Tower, Maslak / Istanbul  
42 Maslak Housing and Shopping Mall / Istanbul  
Makyol Tower  
Now Bomonti Residences / Istanbul  
Çiftçi Towers Residence / Istanbul

## HOTELS

Sheraton Hotel and Conference Hall / Adana  
Sheraton Hotel Ataköy / Istanbul  
Divan City Hotel Taksim / Istanbul  
Pullman Hotel, Güneşli / Istanbul  
Le Meridien Hotel / Istanbul

## CULTURAL

Sakarya New City Library Project / Sakarya  
Kirazlıtepe Cultural Center, Üsküdar / Istanbul  
Deepo Cinema Court / Antalya  
Tüyap Convention Center Food Court and Meeting Rooms / Istanbul  
Tüyap Convention Center / Istanbul

## OFFICES

S2OSB Headquarters and Conference Hall / Sakarya  
Turkcell Data Center / Ankara  
Kar Estate Head Quarter / Istanbul  
Ak-Ay Elektrik Türkiye Head Quarter / Istanbul  
Bavet İlaç Head Quarter and Medicine Warehouse / Istanbul  
Monenco Head Quarter / Iranian  
Merter Meridyen Commercial Center / Istanbul  
Microsoft Turkey Head Quarter, Etiler / Istanbul  
ZTN Elektrik Kale Kalıp, Şekerpınar / Kocaeli  
Kale Havacılık Head Quarter and Production Facilities  
DR. Tarsa Head Quarter and Admin Building / Antalya  
DR. Tarsa Head Quarter Extension Project / Antalya  
Erel Demir Commercial Center / Istanbul  
Öner İnşaat Commercial Building / Istanbul  
Pınar Süt Head Quarter / Istanbul  
Protech LKW SRL Warehouse Project / Romania  
Tanınmışlar Otomotiv Showroom and Service Building / Edirne  
Tadım Kuruyemiş Head Quarter / Kocaeli  
İpekyol Tekstil Head Quarter Mep Yard / Istanbul

## EDUCATIONAL & SPORTS

Cumhuriyet Primary Education School / Düzce  
Çengelköy Sports Hall, Üsküdar / Istanbul  
Tadım Kuruyemiş Sports Hall / Istanbul  
Rotary 100. Yıl High School Sport Hall, Bebek / Istanbul

## HEALTH

Yamata Construction Lavrantiye Hospital / Russia

## RELIGIOUS

City Mosque Project, Salekhard / Russia

## RECREATION

Istanbul Municipality, Yenikapi Recreation and Event Area  
Hacı Osman Forest Renovation Project / Istanbul  
Food Bazaar Project / Balıkesir



Rema İnşaat Sanayi ve Ticaret Ltd. Şti.

Yeni Çamlıca Mah. Mevlana Sok.  
Hasan Eren Apt. No:8/1 Ataşehir/İstanbul  
Tel: +90 532 462 15 27, +90 532 280 09 02

www.remainsaat.com info@remainsaat.com